

SMH10 v4.3 Beta Firmware Notes

Music Sharing with a Rider and a Passenger

You can start sharing music with an intercom friend using Bluetooth stereo music during a two-way intercom conversation. You should **update SMH10 firmware v4.3rc1** to use music sharing function. Please make sure that your headset is **paired with a Bluetooth music device** as well as **another SMH10 headset** for the intercom conversation. If they are not paired, please pair them by following the section “6.1 Mobile Phone Pairing” and the section “8.1 Pairing with Other Headsets for the Intercom Conversation” in the SMH10 User’s Guide.

- 1** Turn on the two SMH10s. You can hear a voice prompt “**Phone connected**” or “**Media connected**” to check the connectivity of the Bluetooth music device. If not, you should pair the SMH10 with the **Bluetooth music device** and **another SMH10 headset**.
- 2** Tap the Jog Dial to start the intercom conversation with an intercom friend.
- 3** Press and hold the Jog Dial for 1 second to start music sharing with an intercom friend until you hear a double beep.
- 4** To convert the mode from music sharing to the intercom conversation, you or your intercom friend can tap the Jog Dial. To come back to the previous mode, you or your intercom friend can tap the Jog Dial again.
- 5** To track forward or to track back, rotate while pressing the Jog Dial clockwise or counter clockwise.
- 6** To terminate music sharing, press and hold the Jog Dial for 1 second until you hear a double beep. When you terminate music sharing, you can go back to the intercom conversation.

Speed Dialing

You can assign a desired phone number to a speed dial on the SMH10 or on PC, and quickly make a phone call by using the voice speed dial menu while the phone is paired. You should **update SMH10 firmware v4.3rc1** to use speed dial function. Please make sure that your headset is **paired with your mobile phone**. If it is not paired, please pair it by following the section “6.1 Mobile Phone Pairing” in the SMH10 User’s Guide.

Assigning Speed Dial on the SMH10

- 1** Turn on the SMH10. You can hear a voice prompt “**Phone connected**” to check the connectivity of your mobile phone. If not, you should pair the SMH10 with **your mobile phone**.
- 2** Press and hold the Jog Dial for 12 seconds.
- 3** The LED shows solid blue and you hear high tone double beeps and a voice prompt “**Configuration menu**”.
- 4** Rotate the Jog Dial clockwise or counter-clockwise until you will hear a voice prompt “**Speed dial**”.
- 5** Tap the Phone Button.
- 6** You will hear a voice prompt “**Speed dial one**” and “**Phone connected**”.
- 7** Rotate the Jog Dial to select one of three speed dial numbers.
- 8** You hear a voice prompt “**Speed dial (#)**”.
- 9** Call a phone number you want to assign.
- 10** You will hear a voice prompt “**Save speed dial (#)**”. The phone number is automatically assigned to the selected speed dial number. Then the phone call will hang up before being connected.

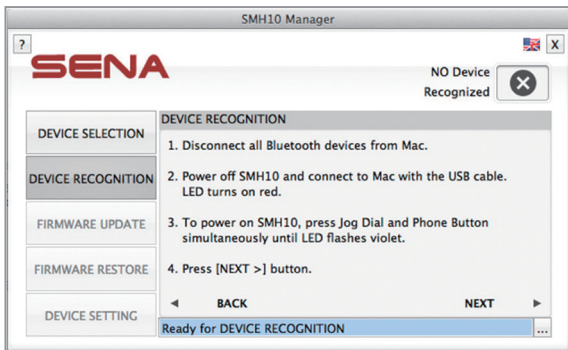
- 11 To exit the menu, rotate the Jog Dial clockwise or counter clockwise until you hear a voice prompt saying “**Cancel**”, and tap the Phone Button to confirm and you will return to stand-by mode.

Assigning Speed Dial on the Sena Device Manager

- 1 Download the Sena Device Manager and SMH10 firmware v4.3rc1 from the site www.SenaBluetooth.com/support and install the Sena Device Manager on your PC.
- 2 Start the Sena Device Manager.
- 3 Select SMH10 and click **NEXT**.

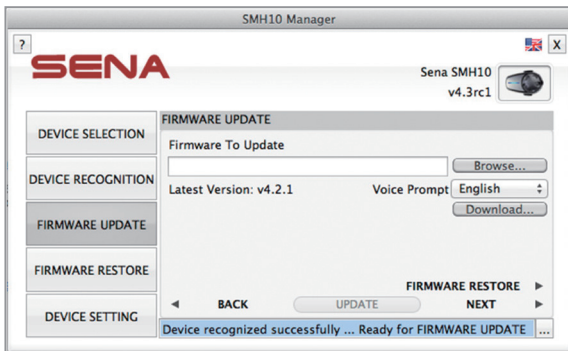


- 4 Follow the steps of the “**DEVICE RECOGNITION**” and click **NEXT**.

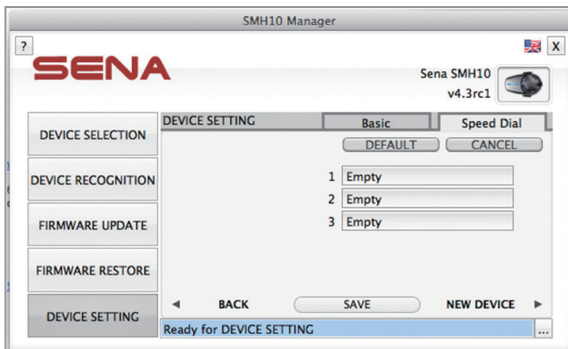


- 5 Check the product image and firmware version.

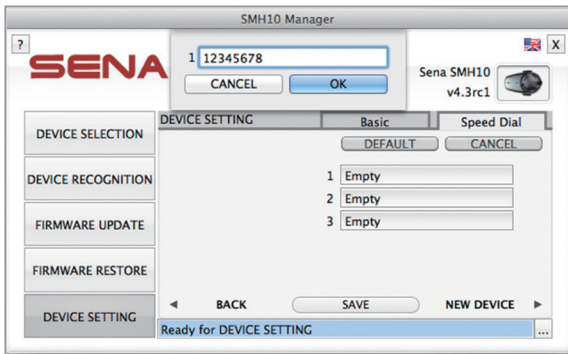
- 6 Click **FIRMWARE UPDATE** > **Browse** to search for SMH10-v4.3rc1. img. And click **Update** to update the firmware. If the firmware version is v4.3rc1, you can skip this step.



- 7 Click **DEVICE SETTING** and select and tap the Speed Dial tab.



- 8 Click one of the three input fields.



- 9 Enter a phone number to assign to the selected speed dial field.

- 10 And click **SAVE**.

Using speed dial

- 1** Double tap the Phone Button.
- 2** You will hear a mid-tone single beep and a voice prompt saying “**Speed dial**”.
- 3** To redial the last phone call number, rotate the Jog Dial clockwise or counter-clockwise to select “**Last number redial**”. To call speed dial call number, rotate the Jog Dial clockwise or counter-clockwise to select “**Speed dial (#)**”
- 4** Tap the Phone Button or the Jog Dial to call the selected speed dial.

SENA

Sena Technologies, Inc.

www.SenaBluetooth.com

Customer Support: support.senablueetooth.com

Tel: 408-300-9797 | E-mail: support@senablueetooth.com